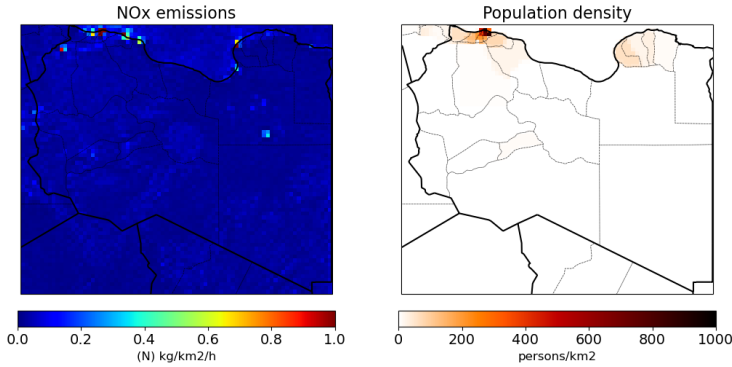


# LIBYA

Info sheet provided by the IMPALA team.

([https://www.temis.nl/emissions/region\\_africa/impala.php](https://www.temis.nl/emissions/region_africa/impala.php))



## Emission country totals

CH<sub>4</sub> = 0.1-0.7 Tg/yr (2018)

CH<sub>4</sub> = 0.1-0.6 Tg/yr (2019)

CH<sub>4</sub> = 0.2-0.9 Tg/yr (2020)

CH<sub>4</sub> = 0.2-1,2 Tg/yr (2021)

Total NO<sub>x</sub> = 406 (N)Gg/year (2019)

## Emissions in Libya

The NO<sub>x</sub> emissions are mostly along the coast where also the highest population density is found. The NO<sub>x</sub> sources to the south are all connected to the oil and gas exploitation.

The main source sector type of methane in Libya is energy and industry (oil/gas). The total emissions derived from TROPOMI and bottom-up emission inventories are comparable but their spatial distribution show large discrepancies.

